

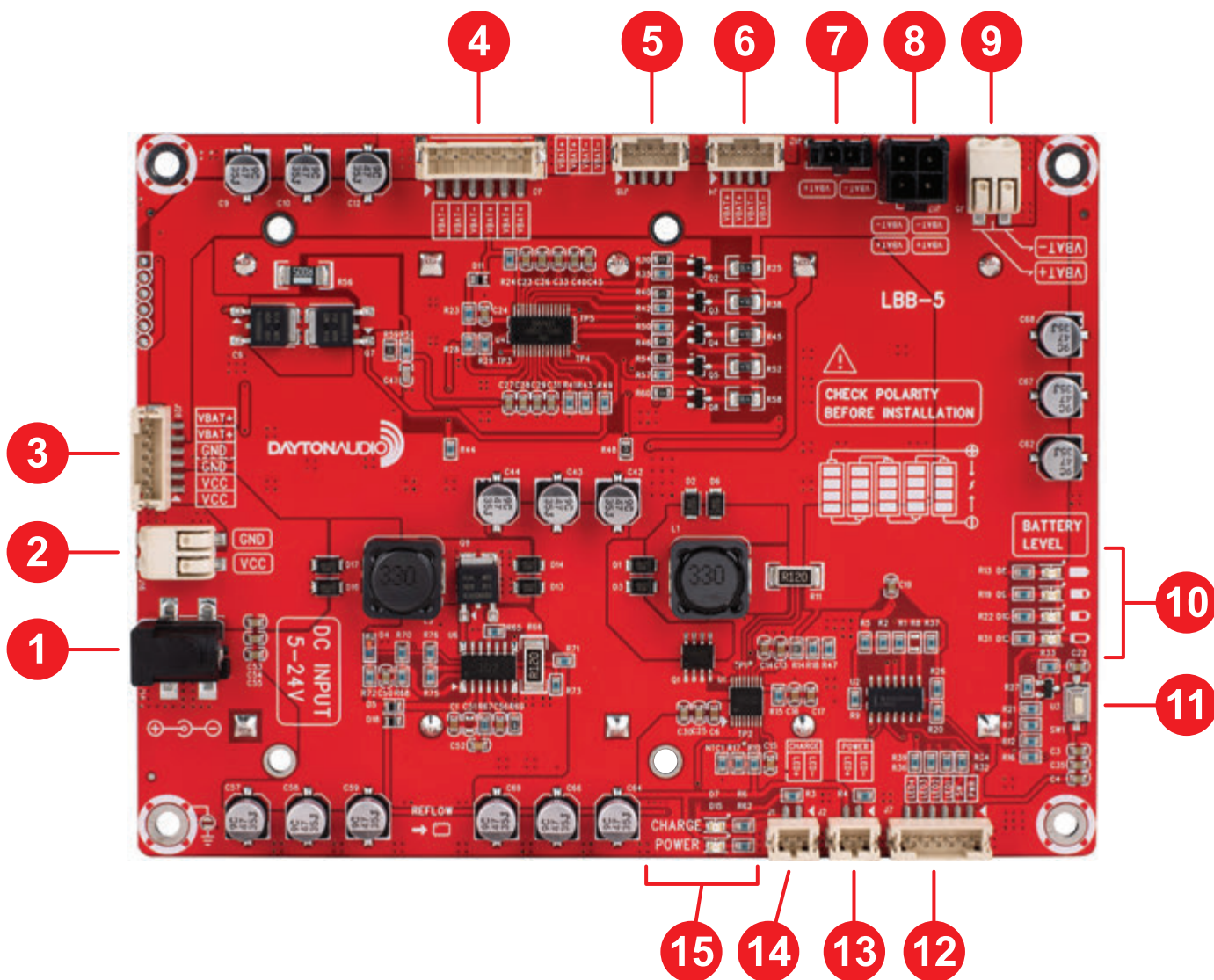


5 x 26650 Lithium Battery Charger Board / Module

Quick Start Wiring Guide

Model: LBB-5

1. Power Input 5-24 VDC - J16
2. Power Input 5-24 VDC - J14
3. Expansion Port - J28
4. Power Output 21 VDC - J3
5. Power Output 21 VDC - J18
6. Power Output 21 VDC - J4
7. Power Output 21 VDC - J13
8. Power Output 21 VDC - J17
9. Power Output 21 VDC - J5
10. LED Indicators for Battery Level Status
11. Battery Level Status Button
12. External Battery Level Status and Switch Port - J7
13. External Power Indicator Port - J2
14. External Charging Indicator Port - J1
15. LED Indicators for Power and Charge



Please note:

A power supply must be plugged into the holder for the battery board to have power output after installing or reinstalling batteries.