

# DAYTONAUDIO



**Dayton Audio KAB-BE Lithium Battery Charger**

## Dayton Audio KAB-BE

- Batteries sold separately: 18650 x3
  1. Use only flat top 18650 batteries, and not 18650 batteries with a button top on the positive side
- Package includes
  1. KAB-BE x1
  2. 8" 4-conductor cable

## Charging Tips

- The KAB-BE is charged in two ways:
  - External Lithium 18650 charger
  - Via the BATTERY port on the KAB series of amplifier boards (KAB-250v4 example to the right) plugged into any port in the KAB-BE
- If an external power supply is plugged into the KAB amplifier, the amplifier will be powered by the power supply and the KAB-BE will charge
  - Note: it is not possible to charge the KAB-BE with an external power supply other than removing the batteries and using a separate charger OR using a KAB series amplifier board as described above
- When removing batteries from the KAB-BE, board must be momentarily connected to charging source after new 18650 batteries are inserted, otherwise the board will not power on.



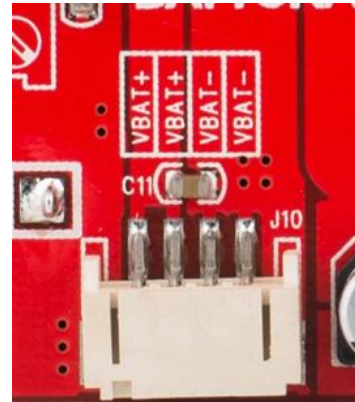
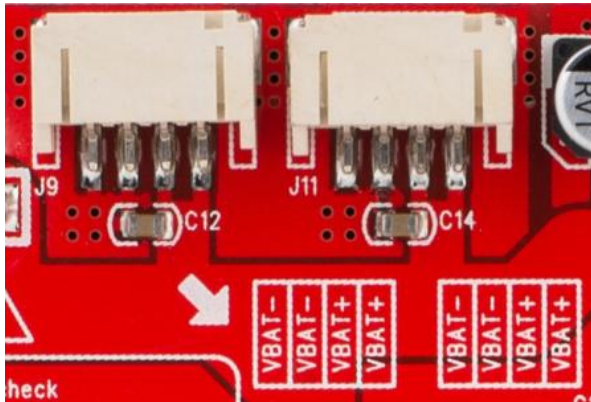
Battery port on KAB-250v4

## Installing Batteries

- Plug in all wiring harnesses necessary for project before installing batteries
- Match the + side of the battery with the + marker on the KAB-BE
  - If a battery's polarity is not marked, check for vent holes or a dimple around the rim of the positive side

## KAB-BE Pinouts

The KAB-BE has three ports, any of which can be used to charge the batteries using the method described above under **charging tips**. Each of these ports also serves as voltage-out from the board to power your project. The two images below show the ports: J9 & J11, and J10.



**Output voltage:** 12 VDC @ 5A Max (combined outputs)

**Charging:** External or KAB series amplifier board & 4-conductor cable (included)

**Dimensions:** 2.68 x 3.61 x 0.15 inches