

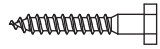
### 1. Technical Specifications

Max VESA: 600×400; Maximum load: 88 Lbs.

### 2. Parts List

Please check the parts in the package in comparison with the following list, make sure all of the parts are in the package. Never use defective parts, never replace part with different specification.

#### Package W



(a) M8X50 Self-tap Screws (4)



(b) 10X50 Plastic Anchor (4)



(c) Ø8 Flat Washer (4)



(d) Bubble Level (1)

#### Package M-1



(A) M8X25 Screws (4)



(B) M8X30 Screws (4)



(C) M8X35 Screws (4)



(D) M4X12 Screws (4)



(E) M5X12 Screws (4)



(F) M4X35 Screws (4)



(G) M5X35 Screws (4)



(H) M6X12 Screws (4)



(I) M8X16 Screws (4)

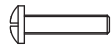


(J) M6X20 Screws (4)

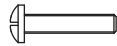
#### Package M-2



(A-2) M8X40 Screws (4)



(B-2) M8X45 Screws (4)



(C-2) M8X50 Screws (4)



(D-2) M8X20 Screws (4)



(E-2) M6X35 Screws (4)



(F-2) Ø4 Washers (4)



(G-2) Ø5 Washers (4)



(H-2) Ø6 Washers (4)



(I-2) Ø8 Washers (4)

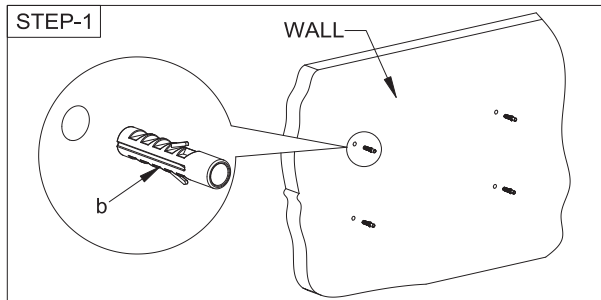


(J-2) Ø8x2.5mm Spacer (4)

### 3. Installation and operation instructions

Note: Read the instructions carefully before beginning installation.

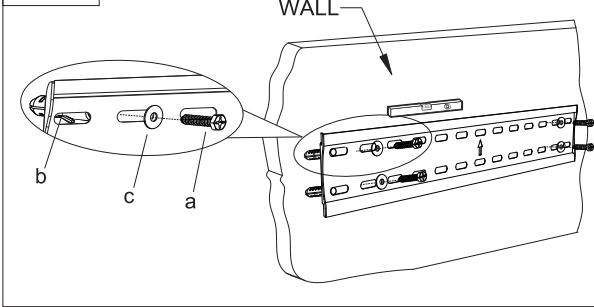
#### STEP-1



#### Step 1:

Use the wall plate as a template to mark where to drill four 10mm holes. Push the plastic anchors into the holes.

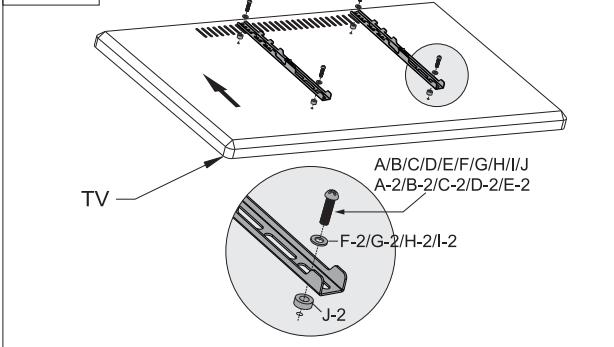
#### STEP-2



#### Step 2:

Install the wall plate to the wall with the included self tapping screws, washers, and plastic anchors. Ensure that wall plate is level.

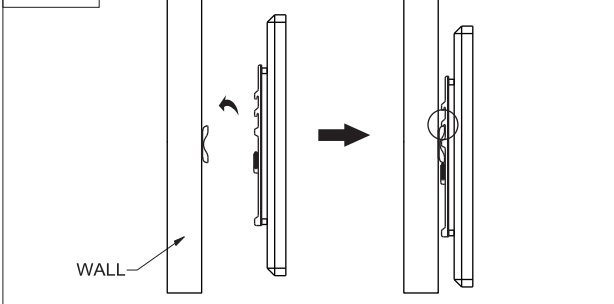
#### STEP-3



#### Step 3:

The package includes a variety of hardware for mounting a variety of televisions. Choose the appropriate screws and washers for your television and mount the bracket rails to the back of the screen. Use spacer J-2 if your television requires additional offset from the wall.

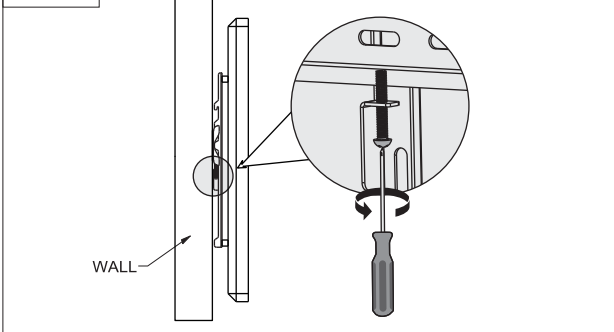
#### STEP-4



#### Step 4:

Hang the bracket rails along with the television on the wall plate using the bottom hooks of the bracket rails.

#### STEP-5



#### Step 5:

Adjust the two bolts under the monitor brackets to secure the television to the wall plate and keep the television from moving.