

Quick Start for the WT3 Woofer Tester

*** VERY IMPORTANT SAFETY NOTE ***

NEVER connect the test leads of the WT3 to a speaker that is connected to any other equipment. Severe damage could occur to the WT3 unit or to the other equipment. Only connect the WT3 to an unconnected loudspeaker.

Here are step-by-step instructions to get you going quickly. Later, if additional help is needed, please refer to the built-in Help Topics under the Help menu.

1) Install the WT3 Software.

Insert the WT3 CD into your PC's drive and locate the file named "setup.exe".
Double-click on the "setup.exe" file to start the installation process.
Follow the on-screen instructions to complete the software installation.

2) Connect the WT3 hardware unit to any convenient USB port on your computer.

After a few seconds the PC will recognize the new hardware. However, on initial power up **the unit requires a full 90 seconds to stabilize before measurements can be made**. After this initial plug-in delay, impedance measurements take only a few seconds to complete.

If you are using Windows Vista please TURN THIS SHEET OVER ➡

3) Set the Windows Volume Controls to Maximum.

From the task bar, double-click on Volume Control to open the mixer and raise both the "Master" and the "Wave" sliders to maximum. The Wave signal also must be panned to center. Although drivers can be tested at lower signal levels, WT3 was designed to be used with the Windows Volume control set at maximum.

4) Launch the WT3 application software.

From the Windows "Start" button select "All Programs" then select "WT3".

5) Connect the alligator clips from the WT3 unit to the 1k Ohm calibration resistor.

6) Select "Impedance Calibration..." under the "Impedance Analyzer" menu.

The software will sweep the resistor and plot the results. The uncalibrated impedance is displayed and the calibration is complete. You might also want to calibrate the test leads at this time.

7) Connect the alligator clips from the WT3 unit to the terminals of the speaker under test.

The speaker must NOT BE CONNECTED to an amplifier or any other equipment.

8) Click on the "Measure Free Air Parameters" button at the left of the WT3 window.

You should hear the sweep and then see the impedance response of the driver appear on the screen. The speaker's free air parameters are displayed in the Parameters Bar at the right side of the screen.

9) Measure the driver's V(as).

Once you have measured the speaker's free air parameters the "Measure V(as)" button becomes enabled. Select one of the three methods to measure the V(as). Then press the "Measure V(as)" button to start the measurement procedure. The three V(as) measurement methods are:

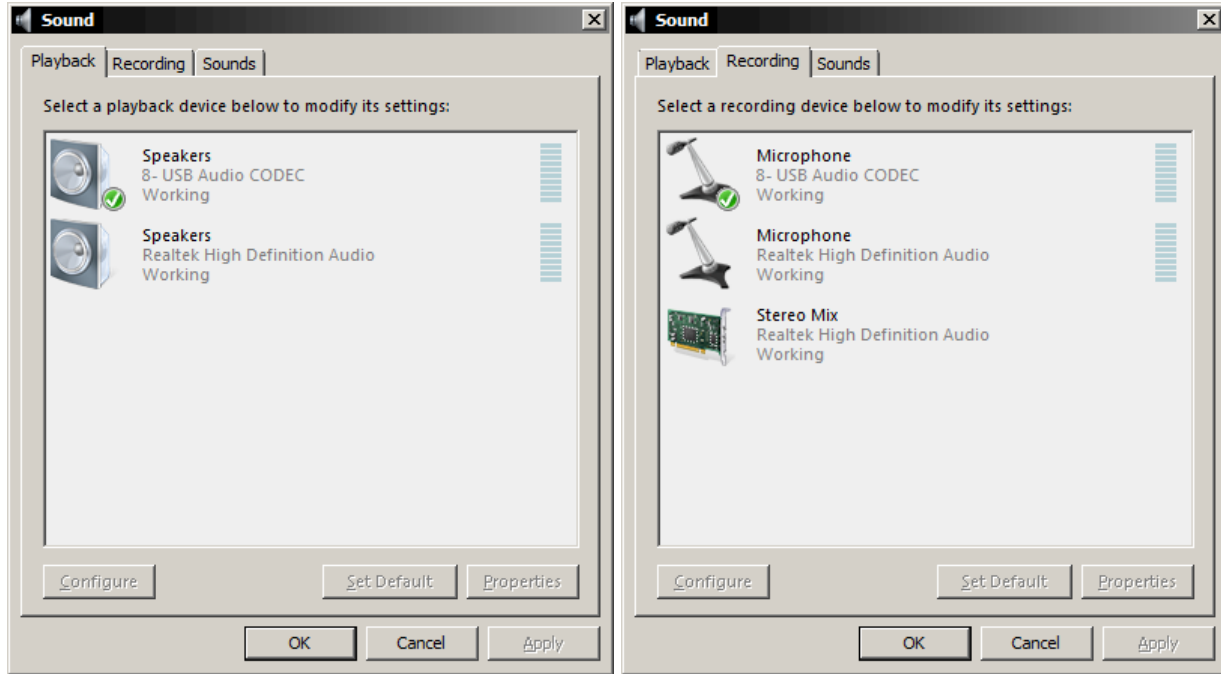
Test Box Method
Added Mass Method
Specified SPL Method

10) After measuring the speaker you can:

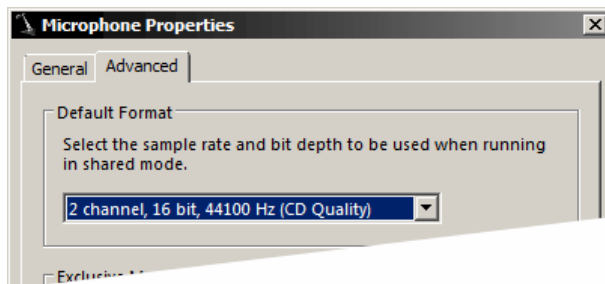
- Save the data to one of 20 project memories.
- Save a project file (file type .wt3) which includes all 20 memories.
- Export the parameters and impedance data in either .txt or .zma formats.
- Overlay plots of various measured impedances from the 20 memories for detailed comparison.
- Print a report showing the impedance and parameters of the displayed memories.

System Setup for WT3 under Windows Vista

1. Go to the Windows Control Panel and open the "Sound" control panel. At the "Playback" tab make sure that "USB Audio Codec" is selected as the default sound system for playback. (the icon should appear with a check mark as shown). If not, then click on the "USB Audio Codec" and then click the "Set Default" button below.



2. Change to the "Recording" tab at the top of the Sound control panel. As above, make sure that "USB Audio Codec" is selected as the default sound system for recording (the icon should appear with a check mark as shown). If not, then click on the "USB Audio Codec" selection and then click the "Set Default" button below. The "USB Audio Codec" should now appear as the default selection. While at the "Recording" tab click on the "Properties" button and then switch to the "Advanced" tab (shown below). If not already selected, then select "2 channel, 16 bit, 44100 Hz (CD Quality)" from the list. Click OK to set the recording format and close the dialog.



3. Click OK to close the "Sound" control panel.

Note that this setup must be performed once for each USB port with which the WT3 unit will be used. Also, when starting WT3, always click on the Speaker icon in the task bar and make sure the Windows Volume Control is set at maximum.