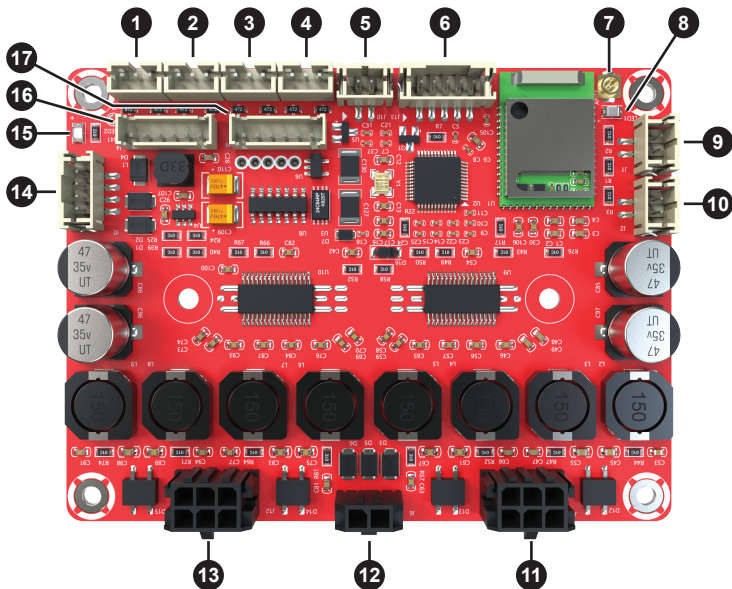


4 x 30W Bluetooth Amp Board with DSP

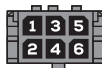
Quick Start Wiring Guide

Model: KABD-430

1. Pot 4
2. Pot 3
3. Pot 2
4. Pot 1
5. Standby Switch Connector
6. Line Input Connector
7. External Bluetooth Antenna Option
8. Bluetooth Status LED
9. External Bluetooth Status LED Connector
10. Bluetooth Pairing Switch Connector
11. Speaker Output Connector J11
12. 10 to 26 VDC Power Connector (Typ. 24 VDC)
13. Speaker Output Connector J12
14. LBB Series Battery Board Connector (12 or 21 VDC)
15. Signal Detection Status LED
16. Programming Connector for ICP1 or KPX
17. I2S Audio Signal Output (Digital Only)



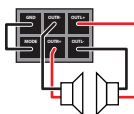
MONO						
MODE DISCONNECTED FROM GND	Pin	Function	Pin	Function	Pin	Function
	1	GND	3	MONO+	5	MONO-
	2	MODE	4	MONO+	6	MONO-



The KABD-430 supports PBTL (bridging) on each speaker port, allowing for 4.0, 2.1, or 2.0 modes. Connecting the MODE pin to GND on either J11 or J12 will enable STEREO mode on that connector, or leave MODE and GND disconnected to enable MONO mode on that connector.

STEREO						
MODE CONNECTED FROM GND	Pin	Function	Pin	Function	Pin	Function
	1	GND	3	OUTR-	5	OUTL+
	2	MODE	4	OUTR+	6	OUTL-

STEREO
CONNECT MODE TO GND



MONO
DISCONNECT MODE FROM GND

